

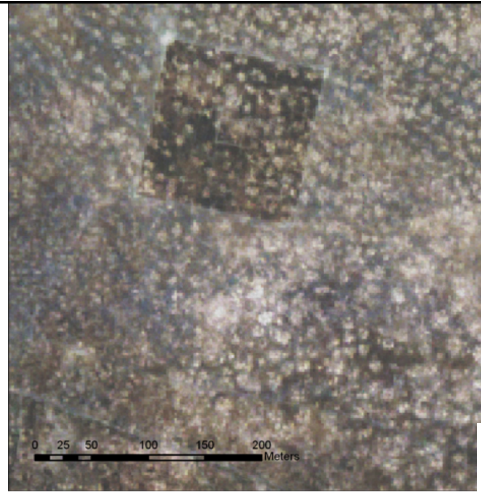
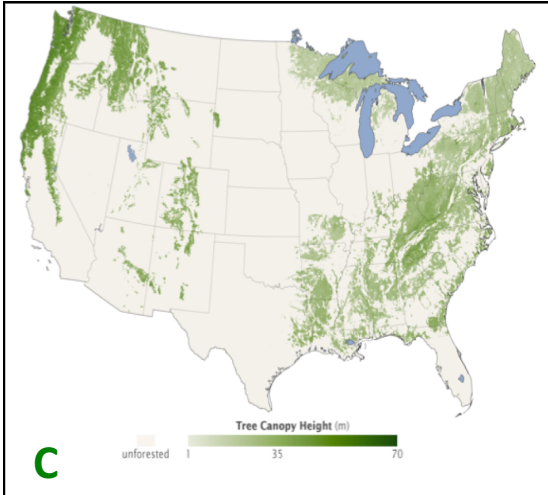
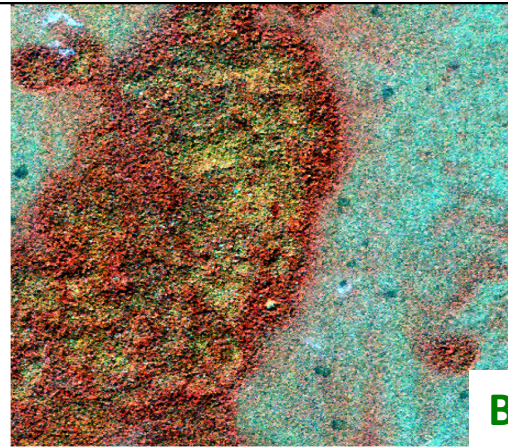
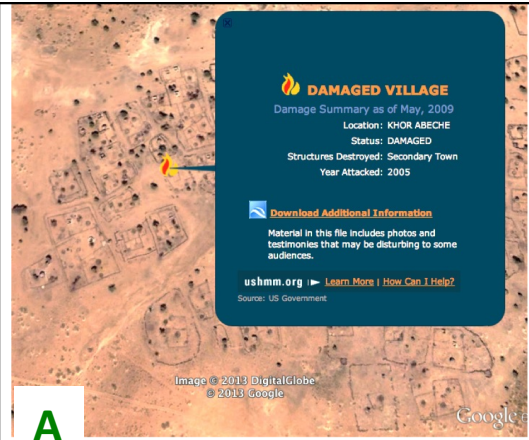
Take GEOG 413 in Fall 2016 (No Pre-reqs!!) 4 Credit Hours

Take the Global Challenge Course: Remote Sensing of the Environment

Lecture: BGB 405, M W F 9:05 – 9:55am, Lab 001: BGB 405, W 12:20pm- 2:15pm

In Remote Sensing you will develop a very marketable skill. In the last 3 years the mean grade is an A-. Remote Sensing is used in:

- A. **Social & Political Studies:** Monitor and assess the impacts of human conflicts
- B. **Archeology & Anthropology:** Finding ancient Mayan ruins (in yellow) using Infra-red remote sensing
- C. **Forestry, Wildlife & Fisheries:** Inventory using LIDAR, SONAR, or RADAR
- D. **Ecology:** Count the population of an endangered species (Giant Kangaroo Rat Burrows)
- E. **Drones!!** Learn to collect your own air photos!



Undergraduate and graduate students in engineering, agriculture, history, archeology, geography, anthropology, earth and planetary sciences, ecology, other related fields are very welcome. Email the instructor (washingtonra@utk.edu) for help enrolling or with any questions.